

All the  
power you need

**EBit 60**





By working with doctors and medical professionals globally for 20 years, Chison is pleased to debut its latest portable ultrasound : the EBit 60.

The EBit 60 provides all the power you need for today's challenging clinical environment, yet remains ultra-portable and ultra-affordable.

With its cutting-edge imaging technologies, precise and intuitive workflow, ergonomic and eco-friendly design, and wide range of transducers for all applications, the EBit 60 is the best portable ultrasound in its class today.

# Mobility

## Innovative Design

- Lightweight ( 7.5Kg / 16.5lbs )
- Wide-viewing angle 15"LED ( 0° - 30° tilted )
- Removable battery, 120 minutes in active mode
- Dual transducer ports ( Built-in )
- Probe holders
- Ports: USB, LAN, VGA, DVI, Video, Remote
- Ergonomic trolley ( accessory box, printer socket & probe holders, optional: theft-proof lock )
- Short-cut key function
- Multi-language



## Clinical Versatility

A complete solution for ultrasound diagnosis

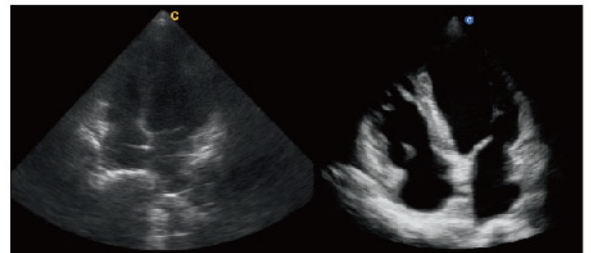
- Cardiovascular
- Radiology
- Internal Medicine
- Small Parts
- General Imaging
- Vascular
- Intensive Care
- Emergency
- MSK
- Point of Care



# Advanced Technologi

## *FHI*

- FHI is an innovative harmonic imaging technology that uses multiple transmission and receiving methods based on the patient's size and weight. This allows the EBit 60 to maintain image resolution when imaging larger patients.
- Traditional Tissue Harmonics and Phased Harmonics compromise image quality and resolution when penetration is increased.
- Chison's FHI technology greatly improves diagnostic abilities and clinical confidence in larger, difficult-to-image patients.



FHI OFF

FHI ON

## *Q-flow*

- This adaptive color detection technology can automatically adjust the assessment of color signal and noise according to different tissues.
- As a result, color sensitivity of low-velocity flow is significantly enhanced.



Q-Flow OFF

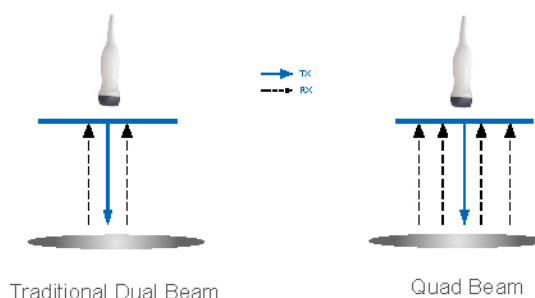
Q-Flow ON

es



## Q-beam

- Compared to the traditional dual-beam former on most ultrasound machines, the EBit 60 uses quad-beam technology for ultrasound signal receiving.
- Doubles the volume of signals received over traditional methods, increasing image resolution and generating more accurate images.
- Produces higher frame rates, ensuring better diagnostic confidence and efficiency, especially for moving organs.



## X-contrast

- The EBit 60 allows one-touch user-adjusted contrast resolution based upon differences in tissue density.
- Enhance, Normal, and Suppress settings increase or decrease contrast resolution, based on the tissue type and user preference.

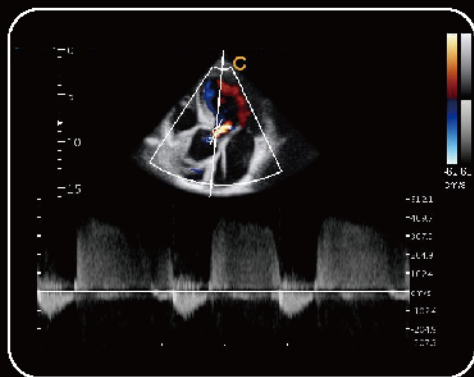


Enhance

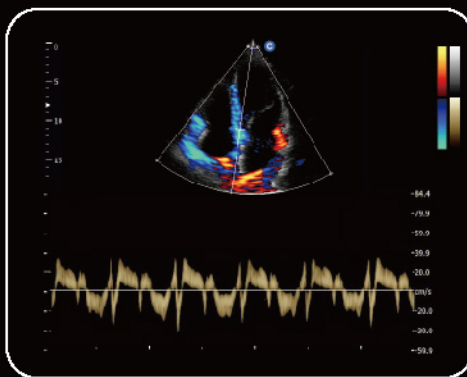
Normal

Suppress

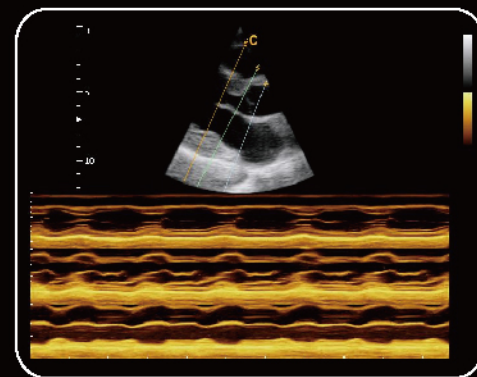
# Diagnostic Confidence



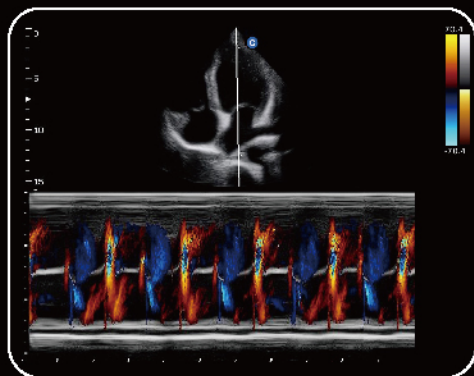
Aorta valve regurgitation, CW Mode



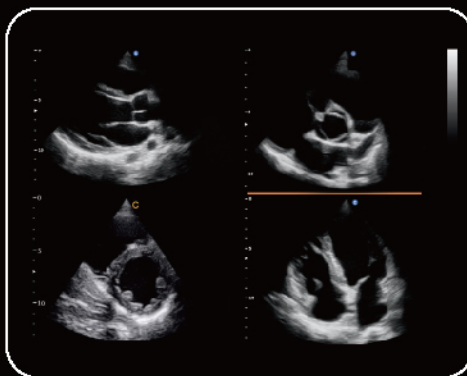
TDI, PW Mode



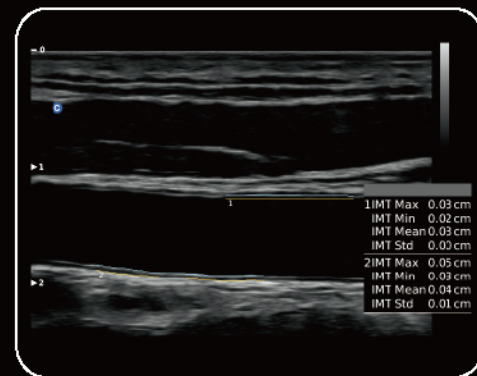
LV Long Axis, Free M Mode



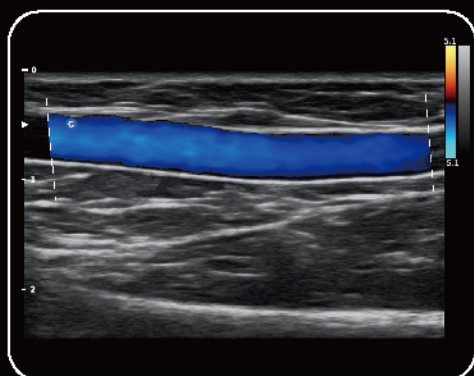
Apical Four Chambers, Color M Mode



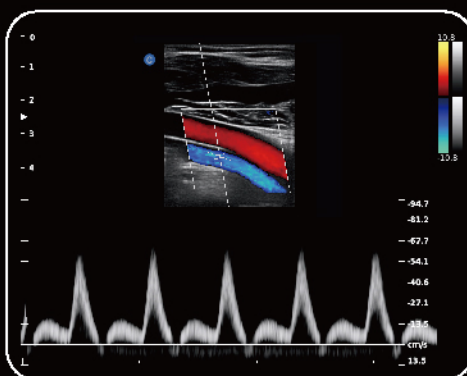
Cardiac, 4B Mode



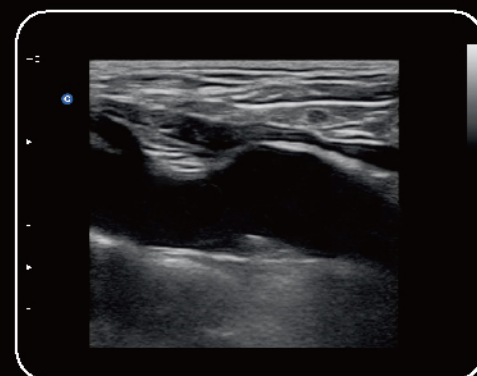
AUTO IMT



Superficial Vessel< 1cm depth, C Mode



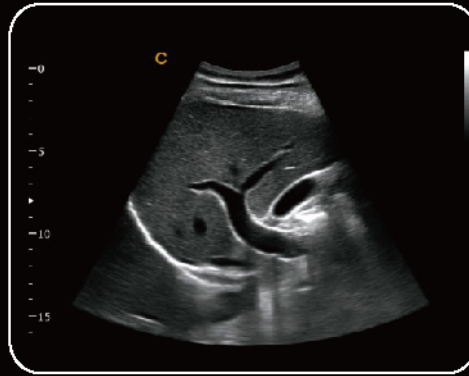
Popliteal Artery, Triplex Mode



Carotid Plaque, B Mode



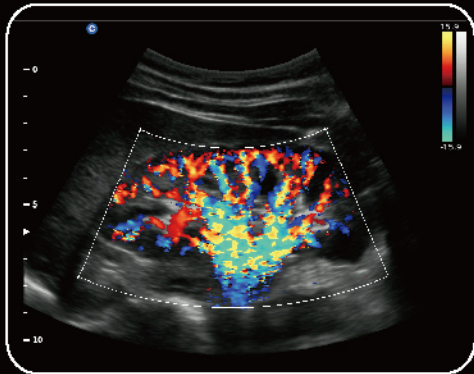
Uterus, B Mode



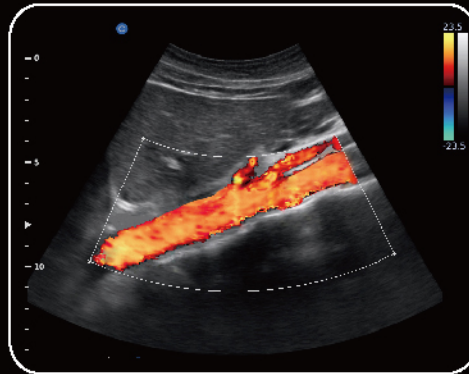
Liver, B Mode



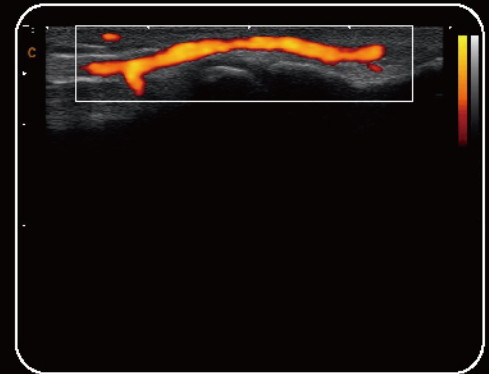
Fetal Heart, B Mode



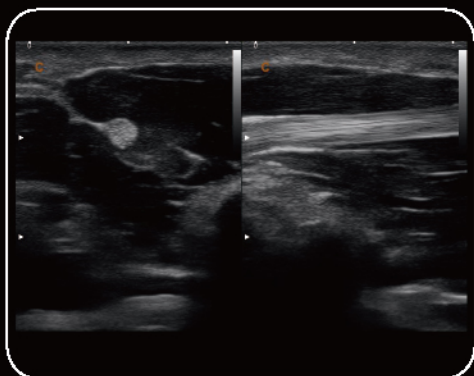
Kidney, C Mode



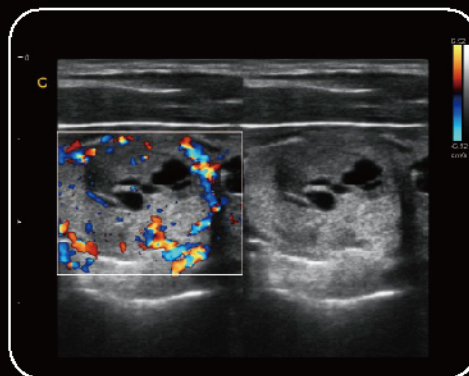
Aorta Artery, C Mode



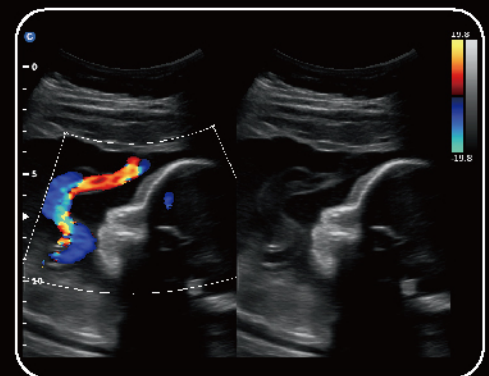
Superficial Vessel< 0.2cm depth, CPA Mode



Primary flexor tendon , 2B Mode



Thyroid multiple adenomas, B/BC Mode



Umbilical Cord, B/BC Mode



All the power you need



2.0 - 6.8 MHz  
Convex C3-E



4.0 - 15.0 MHz  
Linear L7-E



7.0 - 18.0 MHz(With FHI)  
Linear L12-E



4.0 - 15.0 MHz  
Linear L7W-E



1.5 - 5.3 MHz  
Phased Array P3-E



2.0 - 8.0 MHz  
Phased Array P6-E



4.0 - 12.0 MHz  
Transvaginal V6-E



4.0 - 15.0 MHz  
Transvaginal V7-E



4.0 - 15.0 MHz  
Trans Rectal L7R-E



2.0 - 6.8 MHz  
Micro-Convex MC3-E



4.0 - 12.0 MHz  
Micro-Convex MC6-E



4.0 - 10.7 MHz  
Micro-Convex MC5-E

## CHISON MEDICAL IMAGING CO., LTD.

### Sales & Service Contact Address:

No. 9 Xin Hui Huan Road, New District, Wuxi, Jiang Su Province, China214028

TEL: 0086-510-85310593 / 85310937 FAX: 0086-510-85310726 EMAIL: [export@chison.com.cn](mailto:export@chison.com.cn)

We reserve the right to make changes to this catalogue without prior notice.  
Please contact our local dealer for the latest information.